

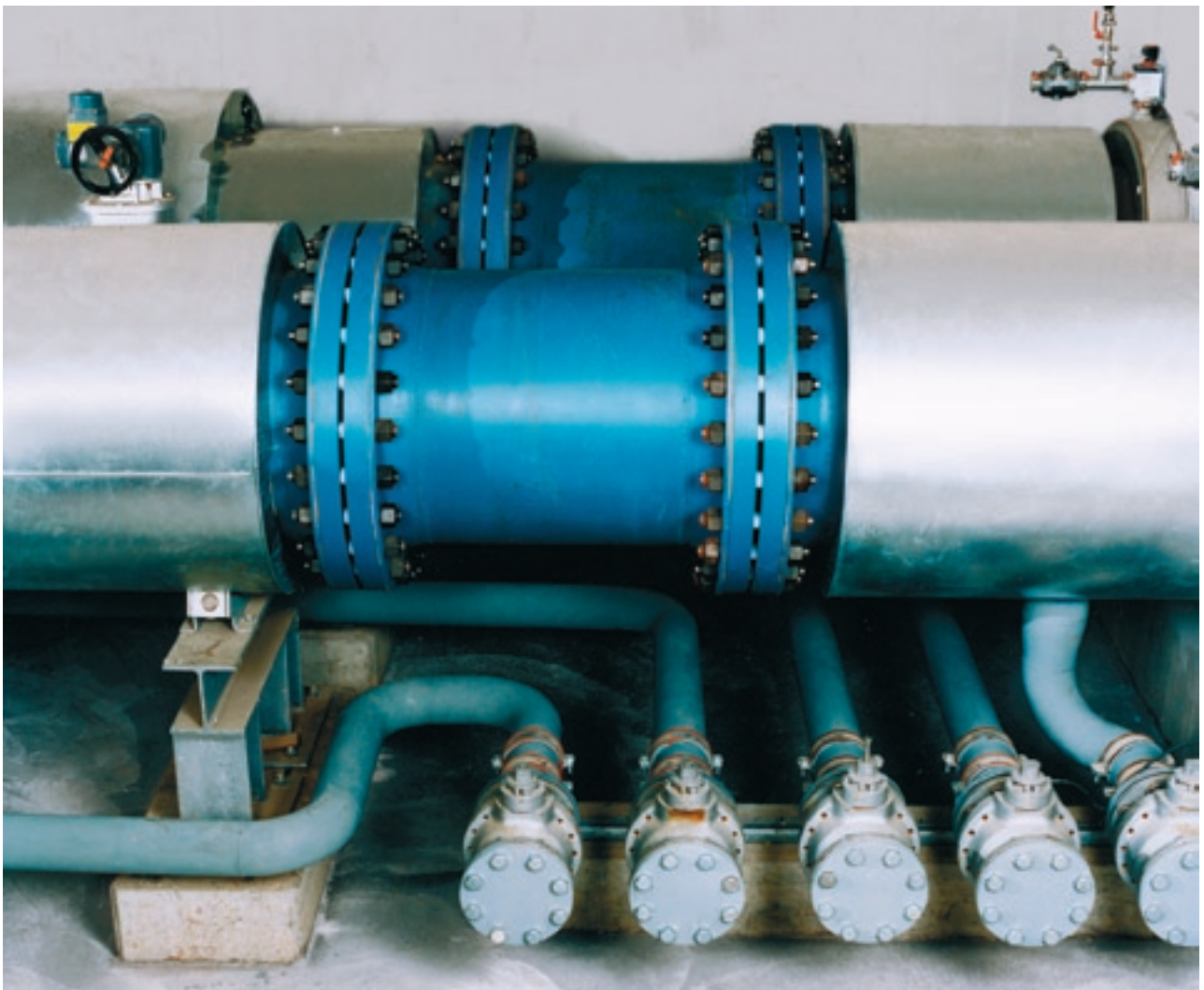


FW-FERNWÄRME-TECHNIK GmbH



**SGL GROUP**  
THE CARBON COMPANY

## Insulating Pieces for Cathodic Corrosion Protection of Earth-Laid Pipelines





# Insulating Pieces for Cathodic Corrosion Protection of Earth-Laid Pipelines

Corrosion refers to a reaction between a metal material and its environment that may cause a measurable alteration of the material and impair the function of a metal component or an entire system. Physical and chemical influences such as stray current, e.g. in the vicinity of trams, have an additional impact on corrosion.

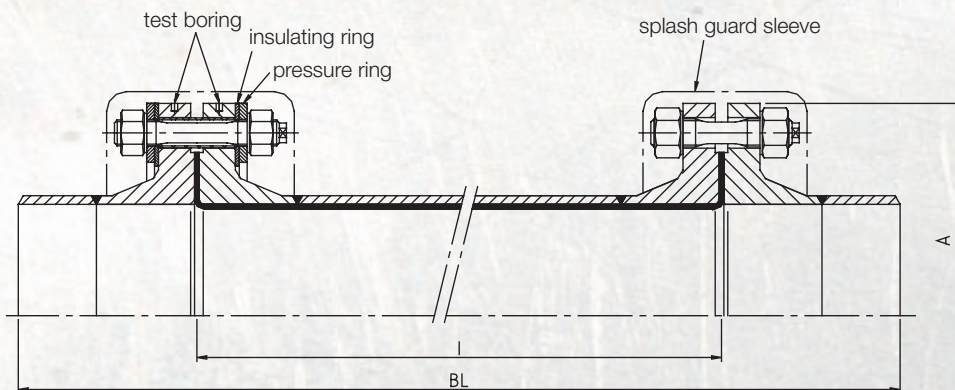
The lifetime of steel structures can be considerably extended by using cathodic protection (CCP). Compared to the value of the object to be protected, the costs of a cathodic corrosion protection system are very low. CCP is the most effective method for active protection against corrosion and ensures safe long-term operation.

According to its basic principle, the metal surface to be protected is made the cathode of a DC circuit in which it is electrically connected to a (sacrificial) anode made of a more easily corroded metal. A low-voltage current compensates the corrosion current flowing in the opposite direction, thus preventing oxidation. This electrochemical process is, amongst others, used for earth-laid steel pipes.

In pipe systems, the protective effect also depends on the quality of the electrical insulation between protected and unprotected sections. Such a galvanic

separation is provided by insulating pieces of FW-FERNWÄRME-TECHNIK GmbH and SGL CARBON GmbH.

The insulating pieces consist of a polytetrafluoroethylene-lined (PTFE) centre piece with two screw-on welding neck flanges. The electrical insulation of the mating flanges in the area of the bolt is ensured by insulating sleeves. Insulating pieces of this kind are much more reliable than short insulation flanges.



**Range of application:**

DN 50 – 1000  
Operating temperatures  
max. 200 °C

**Nominal pressure**

PN 25 to DN 150      PN 40

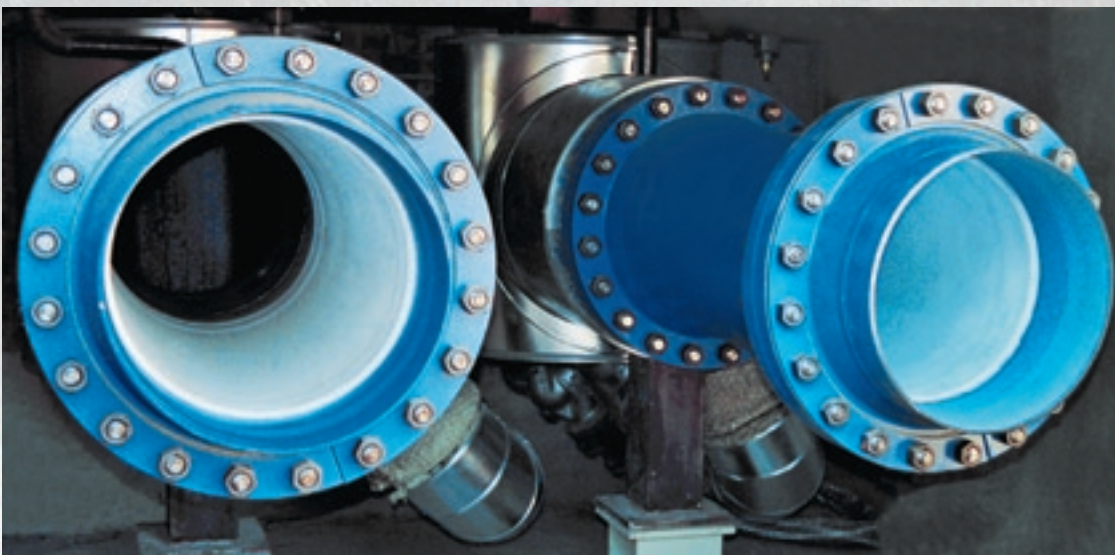
**Materials:**

<b>Steel pipe</b>	P235GH (P265GH)	EN 10217-2
<b>Flanges</b>	P250GH (1.0460)	EN 10092-1/11 C
<b>Bolts/nuts</b>	24CrMo5	DIN 2510
<b>Pressure ring</b>	S235JR	DIN EN 10025
<b>Lining</b>	POLYFLURON®, virginal, paste-extruded PTFE	
<b>Splash guard sleeve</b>	PTFE	

For electrical conductance  $\mu\text{S}/\text{cm}$ , please refer to the AGFW rules and standards worksheet FW 510, "Requirements for circulation water of industrial and district heating systems and recommendations on their operation".



## Installation



### In General

Insulating pieces are delivered in pre-assembled condition. No disassembly of the components is required prior to installation. The weld studs are sufficiently long as to avoid thermal damage to the PTFE lining during the welding process.

However, if it should nevertheless be necessary to disassemble the flanges, the flared PTFE edges should not remain unloaded for more than one hour as this may cause the PTFE liners to bulge back and inhibit installation.

The flow direction of the medium has no effect on the installation.

### Notes on PTFE lining

The PTFE lining in the centre insulation piece is flared between the welding neck flanges having highly profiled

The root run of the weld studs should be GTA-welded in order to prevent welding beads from running onto the PTFE lining inside the insulation flange. The filler and final passes must be MMA-welded.

After having completely welded in the insulating piece, the indicated tightening torque (Table: Md) must be checked.

Upon successful completion of the hydrostatic test, the splash guard sleeves are mounted.

Insulating pieces for steel-in-steel pipes must by no means be equipped with heat insulation laminated with aluminium

sealing surfaces and assumes the function of the flange seal. After exposing the pipe to a thermal load

foil or wire cloth. This lamination would bypass the electrical separation of the insulating pieces rendering them ineffective. The electrical separation must also not be bypassed by sheet metal cladding in the area of the insulating piece, as is the case when an electrical contact is established between the sheet metal cladding and the earthed section of the pipe and the section subject to cathodic protection. Electrical contacts may be avoided by using safety shields.

for the first time, the tightening torques must be checked and must be retightened if necessary.

## Sizes, Weights, Torques

	DN	mm	PN bar	A mm	BL mm	l mm	G kg	Md Nm
on stock	50/25	33,7 x 2,6	25/40	165	549 with IRR	296	21	55
	50/32	42,2 x 2,6	25/40	165				
	50/40	48,3 x 2,6	25/40	165				
	50	60,3 x 2,9	25/40	165	597	296	21	55
	65	76,1 x 2,9	25/40	185	613	304	27	45
	80	88,9 x 3,2	25/40	200	637	316	32	50
	100	114,3 x 3,6	25/40	235	665	330	45	70
	125	139,7 x 4,0	25/40	270	677	336	62	100
	150	168,3 x 4,5	25/40	300	705	350	77	135
	200	219,1 x 6,3	25	360	825	460	116	140
	250	273 x 7,1	25	425	990	606	173	210
	300	323,9 x 7,1	25	485	1036	644	219	220
	350	355,6 x 8	25	555	1111	700	315	330
	400	406,4 x 8,8	25	620	1251	820	416	440
	500	508 x 6	25	730	1561	1100	570	470
	600	610 x 6	25	845	1561	1100	679	650
	700	711 x 8	25	960	1561	1000	927	700
800	813 x 8	25	1085	1581	1000	1238	1000	
900	914 x 10	25	1165	1601	1000	1561	1000	
1000	1016 x 10	25	1320	1621	1000	1920	1400	



One of the world's leading suppliers of system solutions, equipment, components and services for the chemical and related industries. 2007 Acquisition of Dr. Schnabel GmbH, the specialist for premium PTFE products in the area of process technology.

SGL CARBON GmbH  
Werner-von-Siemens-Strasse 18  
86405 Meitingen - Germany  
Phone +49 (0)8271 83-1564  
Fax +49 (0)8271-83-2101  
www.sglgroup.com  
manfredbirle.ptint@sglcarbon.de



**FW-FERNWÄRME-TECHNIK GmbH**

Established in 1980  
Manufacturer of pipe-in-pipe systems for a temperature range of -200°C to +400°C (liquefied gas, e.g. LNG, steam, high-pressure hot water, hazardous media)

FW-FERNWÄRME-TECHNIK GmbH  
Graffring 2 - 6  
29227 Celle · Germany  
Phone +49 (0)5141 88888-0  
Fax +49 (0)5141 88888-22  
www.fw-gmbh.de  
info@fw-gmbh.de